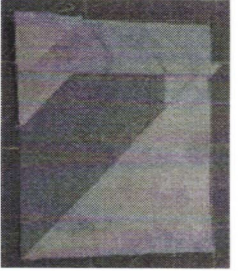
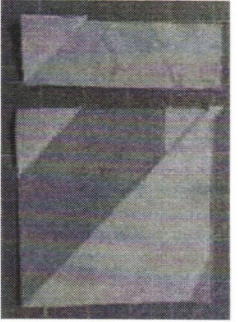
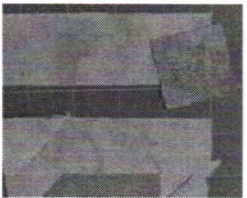


### SEWING THE BLOCK

1. Trim and press. Then sew the two units together.



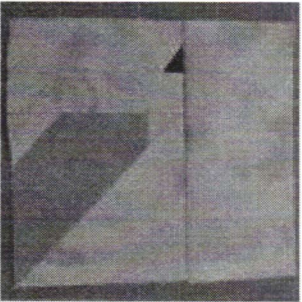
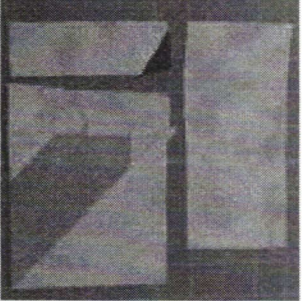
2. Create the beak by using the small BLACK square to the SKY rectangle. The beak should be smaller and slimmer than just adding a square and stitching diagonally. Position it as you like, making sure the folded back BLACK portion will cover the corner of the SKY after it's sewn. I creased the fabric so I would know where the seam should go.



3. Stitch. Press. Trim to maintain the rectangle shape.

4. Sew the sky/beak rectangle to the bird.

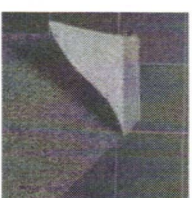
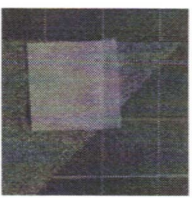
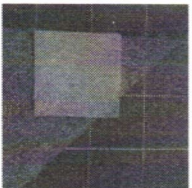
5. Add the ~~sky~~ <sup>3</sup>by 6 1/2 inch SKY rectangle to the top.



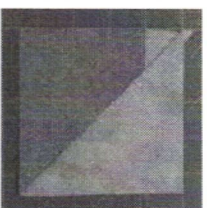
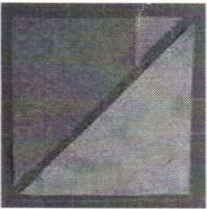
### SEWING THE BLOCK



6. Add one small square of BODY fabric to the WING triangle by positioning it as shown, sewing, then trimming to original triangle shape.



7. Add the SKY triangle to sew a half square triangle. Square up to 4 1/2 inches square by trimming from the sides without the piece of BODY before continuing.



8. Add the other small square of BODY to the corner of WING fabric, by placing it, right sides together, aligning the corner and edges, drawing a line diagonally across the small square and sewing on the line.

9. Repeat the process with the rectangle of BODY fabric and the square of SKY.

