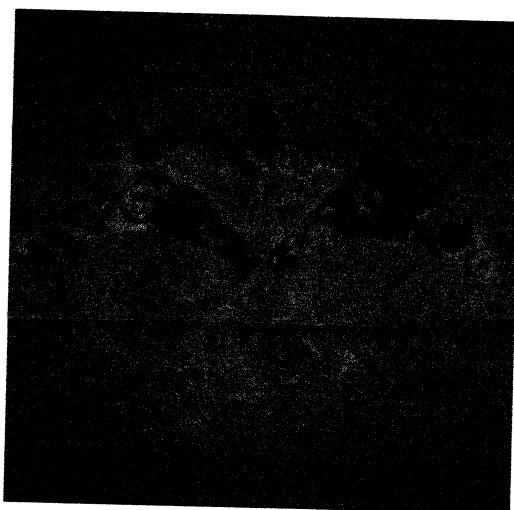


Tutorial for Drunken Birds Patchwork Block



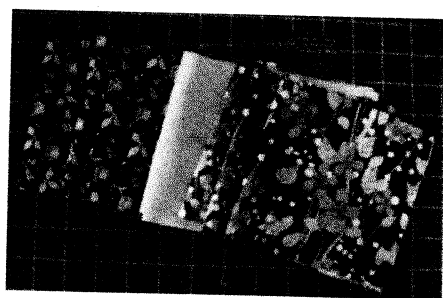
This is a great setting design using Drunkard's Path blocks that I first discovered using Google and Pinterest. I used a set of Sissix dies to cut several sets to make co-ordinating pairs of bird blocks. I found that the lozenge piece of scrap when cutting arcs for the wings was ideal to cut in half and use as the head. The block can be stitched either by hand or machine although I found it easiest to applique the head piece by machine using a narrow zig-zag stitch.

Equipment:

Sissix dies or card templates, scissors, hand sewing needle and thread or sewing machine and Microtex 70 or 80 needle and thread. Iron.

Materials:

background fabric – print 1, wings and head – print 2, for shoulders and tail – complimentary print 3.



* ATTACHED ARE
LARGE & SMALL
PATH TEMPLATES.

* SISSIX IS A
DIE CUT SYSTEM
WITH PRE-
MEASURED SIZE
DISKS.

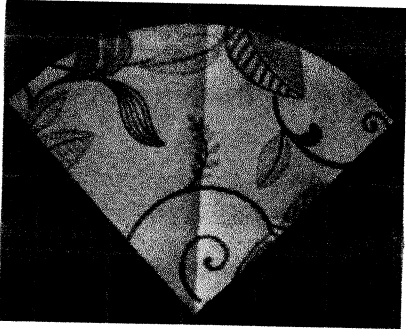
Cutting plan:

- 3 x ¼ circle pieces in background print 1,
- 1 x arc piece in background print 1
- 2 x arc pieces in print 2 for wings
- 1 x 1/2 lozenge shape in print 2 for head
- 1 x arc in print 3 for shoulder
- 1 x ¼ circle in print 3 for tail

YOU CAN DRAFT
YOUR OWN SIZE
DRUNKEN BIRDS
"DRUNKARDS PATH"
BLOCKS

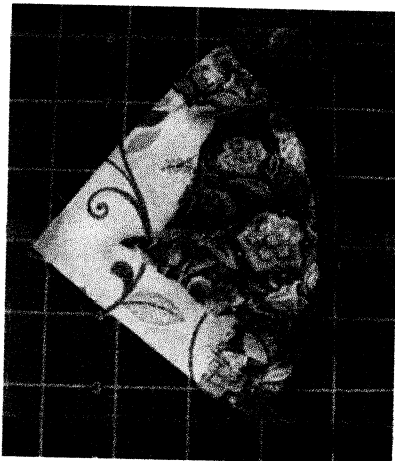
Method:

1. Establish centre points of head piece print 2 and one of the 1/4 circles print 1

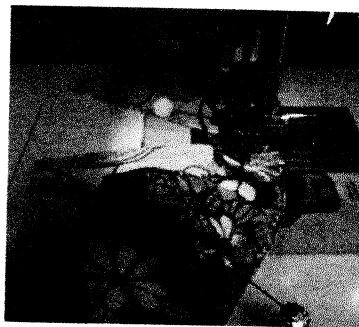


2. Place headpiece onto 1/4 circle, lining up the centre points and raw edges of the curve with the straight edge of the head piece. Applique stitch in place (use zig-zag or blanket stitch).

3. Take the shoulder piece (arc shape) of print 3 and matching centres with the 1/4 circle, pin and stitch taking a 1/4 seam.

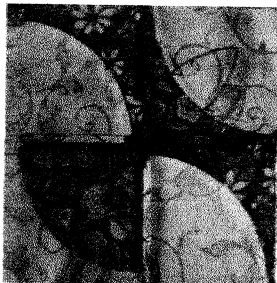


3. Fold each of the remaining 6 pieces in half to establish the centre points pin and stitch together to make the other 3 portions of the block. I usually stitch the wing arcs print 2 to 1/4 circles print 1 next, and finally the tail arc print 3 to the 1/4 circle print 1



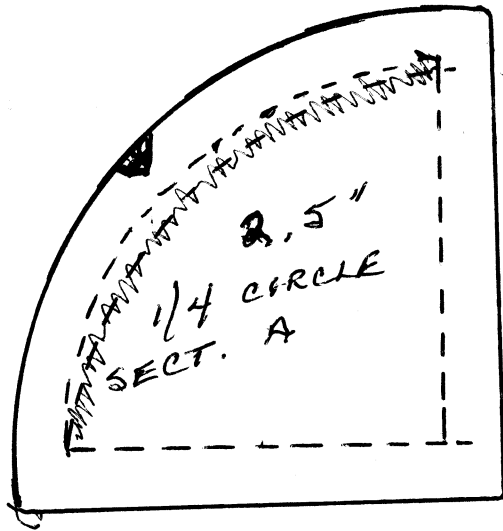
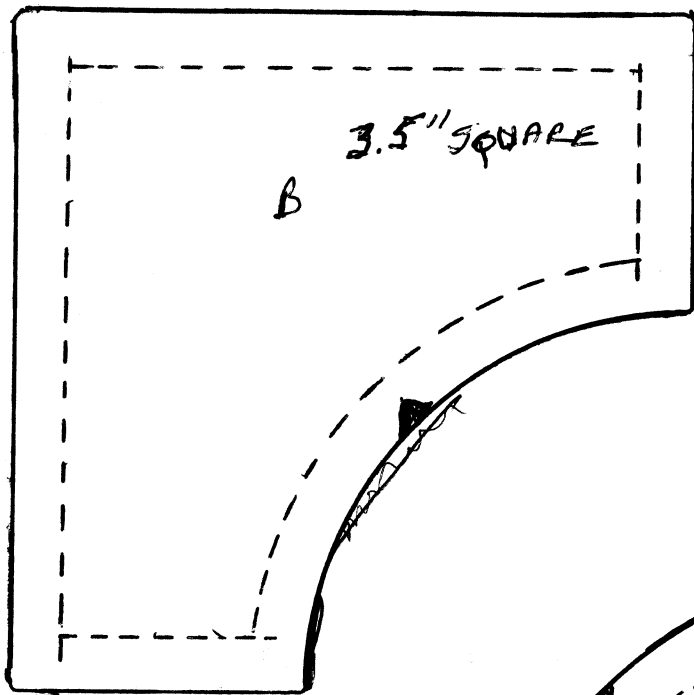
4. If stitching on the machine you can chain piece these together. Press the seam allowances away from the 1/4 circles and towards the arc sections of the block.

5. Stitch the 4 portions of the block together according to the plan to make a complete Bird block. Press the joining seams open and flat.



6. Enjoy your completed block!





7.5" SQUARE

~~Feature~~

B

~~20' from center~~

~~20' recorded location~~

Straight Grain

6"
~~5.5"~~

1/4 SECTION CIRCLE

~~Feature~~

A

~~20' from center~~

~~20' recorded location~~

