

Orchard Valley Apple Wallets

These little wallets were inspired by Erin Erickson Gilbey's Earbud Pouch Wallets. Visit her site at <http://www.dogundermydesk.com/> to learn more!

Materials: (for cutting purposes find 2 sizes of apples on the last page)

- ✂ 2 piece medium weight woven interfacing 5 ½" x 6"
- ✂ 1 piece quilt batting 5½" x 6"
- ✂ 2 piece lining fabric 5 ½" x 6"
- ✂ 2 piece exterior fabric 5 ½" x 6"
- ✂ 1 nylon zipper in matching or contrasting color at least 6" long (the longer zippers, are easier to install)
- ✂ 1 piece gross grain ribbon or nylon shoelace in matching or contrasting color 2½" long.

Step 1. Prepare fabrics

Cut one apple shape from each of:

- ✂ one 5 ½" x 6" lining fabric
- ✂ one 5 ½" x 6" exterior fabric and
- ✂ one 5 ½" x 6" batting

Fuse interfacing to wrong side of

- ✂ one 5 ½" x 6" lining fabric
- ✂ one 5 ½" x 6" exterior fabric

Decide where you want to place the zipper now. If you want it in the centre of the apple follow Alternative Zipper#1. If you want the zipper closer to the side or the top of the apple, follow Alternative Zipper#2. Note that illustrations show zipper placement centred. I discovered later that it is easier to insert a credit card if the zipper is off-centre

Step 1 Alternative Zipper#1.

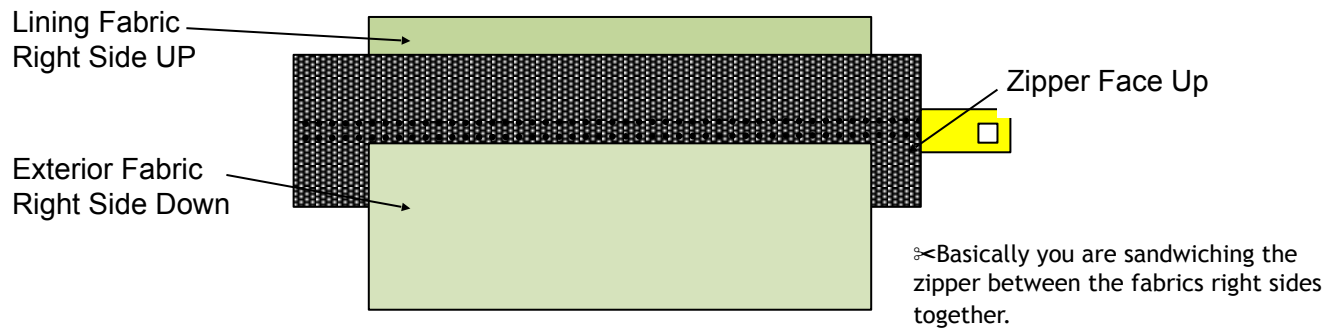
Fold interfaced lining and exterior fabrics in half so that you have two pieces that are 5½" x 3". Cut along folds. You will have 4 pieces of 5½" x 3" fabrics.

Step 1 Alternative Zipper#2.

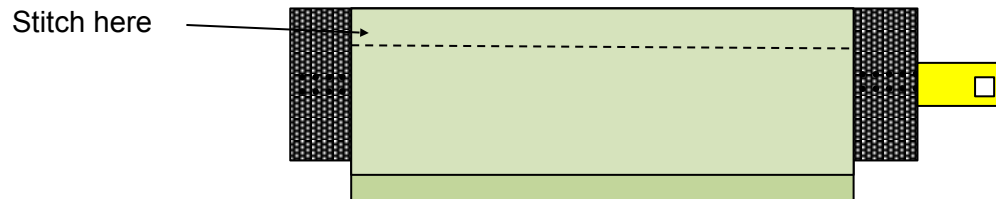
Fold interfaced lining and exterior fabrics so that 2½" overlaps 3½" of the fabric. Cut along folds. You will have 2 pieces of 5½" x 2½" and 2 pieces of 5½" x 3½".

Step 2. Install Zipper

a) Using a lining and an exterior fabric from step 1 b), arrange the fabrics and zipper as indicated below

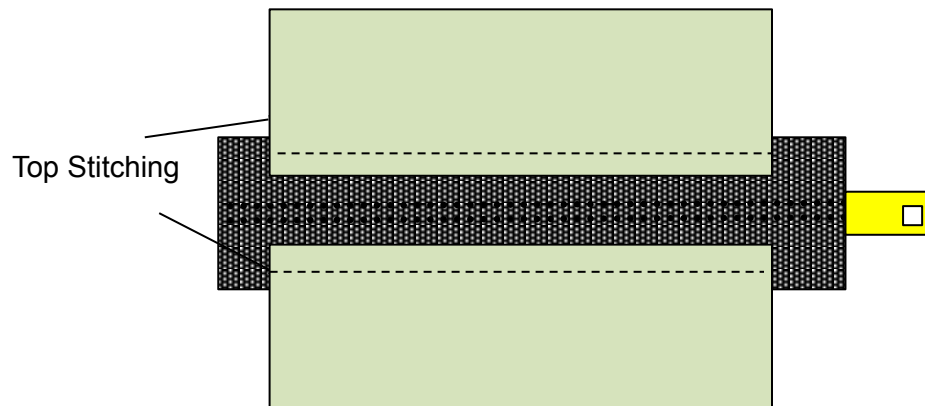


b) Align fabrics and zipper to top edge and stitch $\frac{1}{4}$ " from the edge.

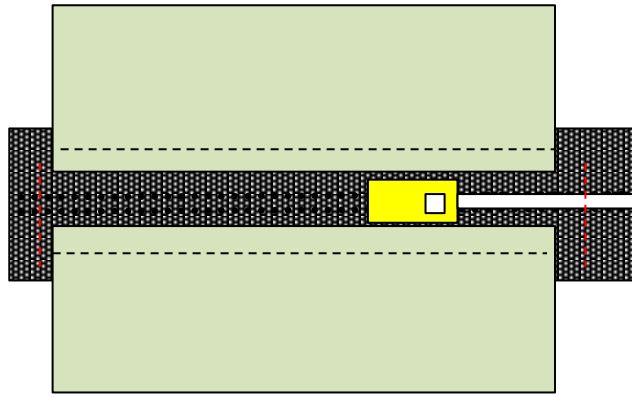


c) Fold both fabrics away from the zipper. Interfaced sides should now be together. Press. Top stitch zipper

d) Repeat for other side of zipper

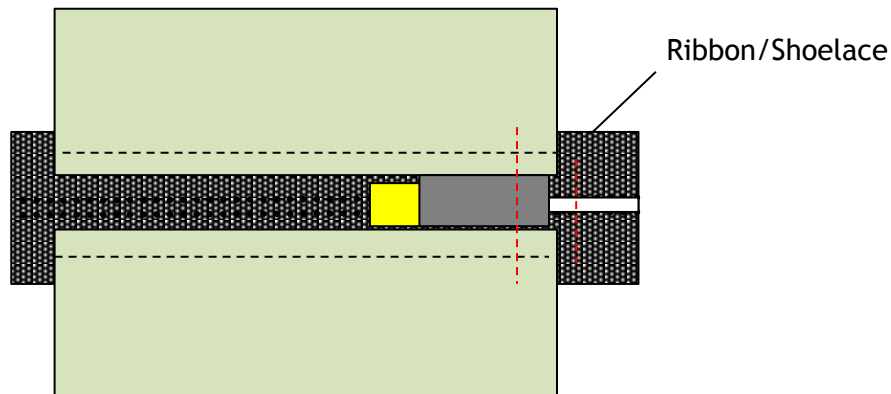


e) Open zipper and stitch across opening at top and bottom to keep them closed



Step 3. Attach Ribbon

- a) Baste ribbon or shoe lace to right side of zipper as shown



Step 4. Complete the wallet

- a) Layer batting between wrong sides of apple fabric and apple lining (e.g., right sides out)
- b) Pin apple shape to zipper block, right sides together (heart shape is shown for illustration purposes only)
- c) Stitch $\frac{1}{4}$ " around apple shape, reinforcing at the top and bottom of the zipper.
- d) Trim batting from between lining and exterior fabrics in the seam allowance to reduce bulk.
- e) Trim apple shape a scant $\frac{1}{4}$ " around front and back. (Trimming front and back at the same time makes a clean cut that turns and topstitches nicely)
- f) Turn right sides out working seams smooth.
- g) Top stitch around the outside of the apple. Starting and finishing at the zipper top stitching. (Do not top stitch across the top of the zipper)
- h) Attach clip to ribbon.

